



Newsletter August 2023



Wichel Fields July 23

Construction Update

Works will begin over the next few months on infrastructure improvements and preparatory works for the next areas of Wichel Fields.

The works will include improvements to the junction between Blackhorse Way and Foxham Way. The temporary barriers will be removed and a new access will be provided to a pumping station and compound area for the Canal Trust. Within the site ground will be levelled to create development platforms and allow the area to drain into the ditches and ponds.

FAQ: Why are you digging a huge hole near the railway line at the north of Wichelstowe?

We are in the process of installing some underground tanks which, along with the swales and attenuation ponds, will allow us to manage surface water run-off from the development. In high rainfall events the tanks provide extra capacity to store water before it's released back into the river network.





News Roundup

More details can be found at www.wichelstowe.co.uk/news



The Wichelstowe Southern Access Scheme delivered by Swindon Borough Council has been shortlisted for the ICE South West Civil Engineering Awards.

The 2.3km of new road provides a link under the M4, and includes a new footway/cycleway and extensive landscaping. The construction technique allowed the full motorway capacity to be maintained during construction

Wichelstowe Transport Conversation

Sat, 16th September 2023

1pm – 4pm

At the Community Square
(nr Hall and Woodhouse), Wichelstowe

Share your views on getting around Wichelstowe

Pick up free maps, magazines and goodies

Discover bus routes, places to walk and cycle

Get your bike security marked for FREE



Head down to the District Centre on Saturday 16th September to take part in the Wichelstowe Transport Conversation.

The Council's travel planning team are keen to hear your views on how to improve travel in and around Wichelstowe.

www.swindontravelchoices.co.uk



An amphibious vehicle took to the canal in East Wichel to clear the reeds and vegetation which has grown up in the area the Council have been monitoring / repairing.

The vehicle allowed the vegetation to be cut close to the base of the canal and for the off cuts to be collected.

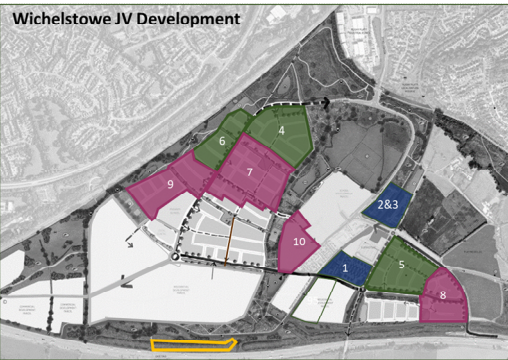
We also used the vehicle in other areas of the site and will monitor reed growth to determine whether this is an effective solution.





The Orchards July 23

Planning Update



A planning application has been submitted this month for the final section of noise bund. Once this application is approved all the bund will be consented, allowing it to be built over time as soil is generated from onsite construction activity.

The bund will generally be 6m in height, largely made up of earth, but in areas where there is not enough space to achieve the desired height a fence is added on top.

The bunds will be planted and the southern bank (facing the M4) will form a particularly good habitat for reptiles who like to bask in the sun. Hibernacula, in the form of log piles will be added to create attractive habitats.

A new home for Wichelstowe wildlife is the subject of another planning application for a bat roost.

Bat boxes are being integrated (where appropriate) in the new homes and the retention of older trees provide roosts for Common Pipistrelle, the most common bats found on site.

In some of the old barn buildings which will be demolished we have also recorded Brown Long-eared bats. We have therefore sought permission for a roost formed from a 2m by 4m pipe set in the ground which is ideal for our furry friends!

