



## Newsletter July 2023



Wichel Fields June 23

### Construction Update

June is one of the busiest months at Wichelstowe with many homes being occupied and construction teams working incredibly hard to ensure the homes are ready for new residents. Over 30 families have picked up their keys and begun their new life in Wichelstowe

Works will begin over the next few months on infrastructure improvements and preparatory works for the next areas of Wichel Fields. These will include some works to improve the junction between Blackhorse Way and Foxham Way.

#### **FAQ: What is happening in the grey fenced off area by the Kingfisher school?**

Construction work is expected to start over the next few months on a 83 bed care home. The site has been disposed to a third party and it is anticipated that the scheme will take over a year to complete.



## Focus on Ecology - Swifts

We are celebrating Swift Awareness Week (1<sup>st</sup> to 9<sup>th</sup> July) by taking a look at some of the measures taken at the development to provide homes for swifts.



### Swift Bricks

Many of the homes at Wichelstowe have swift nesting bricks installed. The RSPB, through their partnership with Barratt Developments provide advice on the best locations with some homes having single bricks and others groups of 3.

This month has seen the installation of the **150<sup>th</sup>** swift brick at Wichelstowe. By the time the development is complete we are aiming to have as many swift bricks installed as homes built.

The bricks are self-contained nesting sites that are built into the fabric of buildings, mirroring the cracks and crevices found in older buildings that are so attractive for nesting.

An abundant supply of insects is also critical for swifts survival, especially when they have chicks to feed. In addition to the nesting bricks, the habitats being created at Wichelstowe aim to provide insects to feed swifts as well as other wildlife.

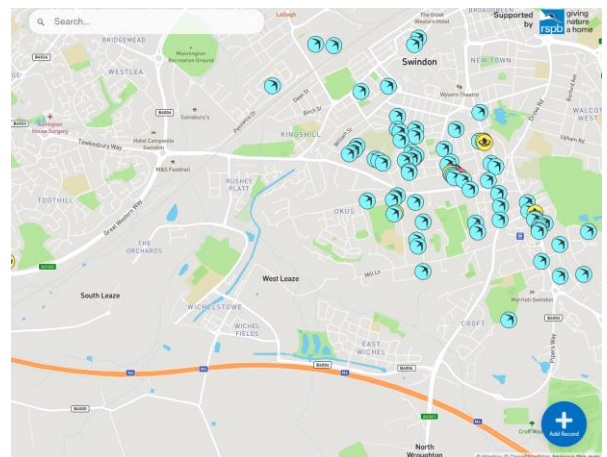


### Monitoring

Swifts have frequently been spotted in the Wichelstowe area and have been seen by the projects ecologists using the swift bricks installed in Canalside. We would however like residents and visitors help in recording sightings. The Swift Mapper website <https://www.swiftmapper.org.uk/> has many sightings in Old Town but we'd love to see some added in Wichelstowe.

Swifts are with us for just a few short months, late April to early August, so now is the perfect time to look out for them.

If you need help identifying swifts, the RSPB [website](#) highlights the identifying features and the swifts distinctive call.





## News Roundup

More details can be found at [www.wichelstowe.co.uk/news](http://www.wichelstowe.co.uk/news)



The Orchards Rise site manager has won a top national award for the quality of homes.

Clyde Cocking has won the National House Building Council's (NHBC) prestigious Pride in the Job Award, which is awarded to the top 5% of site managers in the country.

The awards rate site managers against key criteria such as technical expertise, health and safety, consistency, leadership and attention to detail.

Congratulations Clyde!



The Council are continuing to seek out and fix leaks in the canal at East Wichel. The works are being completed in sections and a key milestone was reached this month within the eastern section, adjacent to the completed housing. Some of the clay bunds have therefore been removed reconnecting a much greater section of canal.

Work continues further west along the canal and some minor vegetation clearance works are planned within the main channel.



The impressive Orchards Rise apartment block has been released for sale.

Blythe House is a four-storey red brick apartment building with contemporary metal detailing and forms a landmark on the development welcoming residents to The Orchards.

The distinct, modern apartments include large windows which provide views of green space to the east, with its feature Birds in Flight sculpture, and across the open space and attenuation ponds to the north.





The Orchards June 23

## Planning Update



Planning consent was granted for the new bus-only crossing between Middle and West Wichel this month (highlighted in yellow on the plan). Whilst this will not be built for some time it is important that the design was considered alongside Parcels 7 and 10, to ensure this area of the development all ties together. A bridge is required in this area to cross the existing watercourse.

Progress is also being made with the consents for the new stretch of canal between East Wichel and Mill Lane (highlighted in orange). The main design principles have now been agreed with only some individual planning conditions still outstanding.

## Upcoming Events

Wichelstowe is delighted to support the Wroughton Carnival taking place on 8<sup>th</sup> July 2023. More details can be found here:

<https://www.wroughtoncarnival.uk/>

More details can be found at [www.wichelstowe.co.uk/news](http://www.wichelstowe.co.uk/news)

